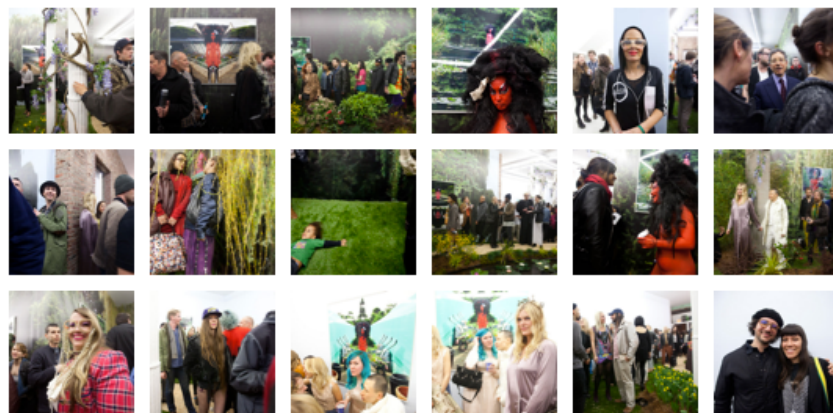


PAPERMAG

Kembra Pfahler and E.V. Day's "Giverny" Opens at the Hole

BY PAPERMAG

PHOTOGRAPHS BY REBECCA SMEYNE



In 2010, photographer **E.V. Day** was awarded the Munn Artists Residency by the Versailles Foundation, which invites recipients to live on Monet's estate in Giverny among the gardens that inspired his iconic impressionistic works. Day asked artist **Kembra Pfahler** to visit, which spawned their "**Giverny**" photo collection, featuring Pfahler injected among the gardens' iconic lily ponds and verdant scenery in her other-worldly wiggled-and-painted look associated with her performance art/glam-punk project **The Voluptuous Horror of Karen Black**. The exhibit opened Friday night at Bowery gallery **the Hole**, which has been transformed into a mini Giverny for the show, complete with with a lily pond and a green Japanese footbridge. Attendees included **Jeffrey Deitch**, photographer **Spencer Tunick**, designers **ThreasFour**, **Terence Koh**, **Aurel Schmidt**, **Spencer Sweeney**, the Raveonettes' **Sune Rose Wagner**, **No Bra**, **Michael Stipe**, model **May Anderson** and, of course, **Kembra Pfahler** and Hole owner **Kathy Grayson**. The exhibit is [open through April 24th](#). Check out Rebecca Smeyne's photos from the opening.

This story was published on Apr. 2, 2012